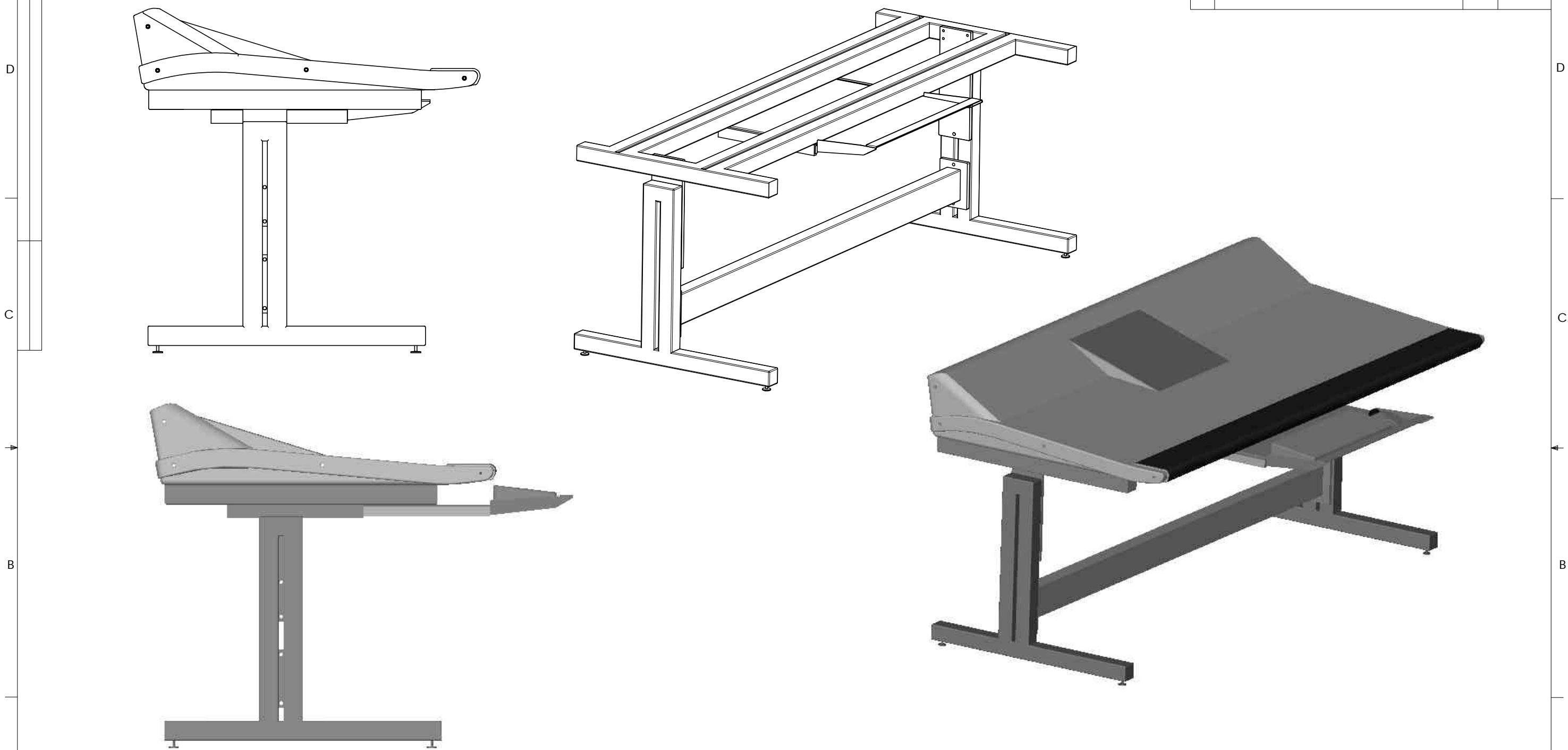


THE INFORMATION CONTAINED IN THIS DRAWING IS THE SOLE PROPERTY OF EUPHONIX INC. ANY REPRODUCTION IN PART OR WHOLE WITHOUT THE WRITTEN PERMISSION OF EUPHONIX IS PROHIBITED.

REVISIONS			
REV.	DESCRIPTION	DATE	APPROVED
A	REL FOR PRODUCTION	2/20/03	JMG

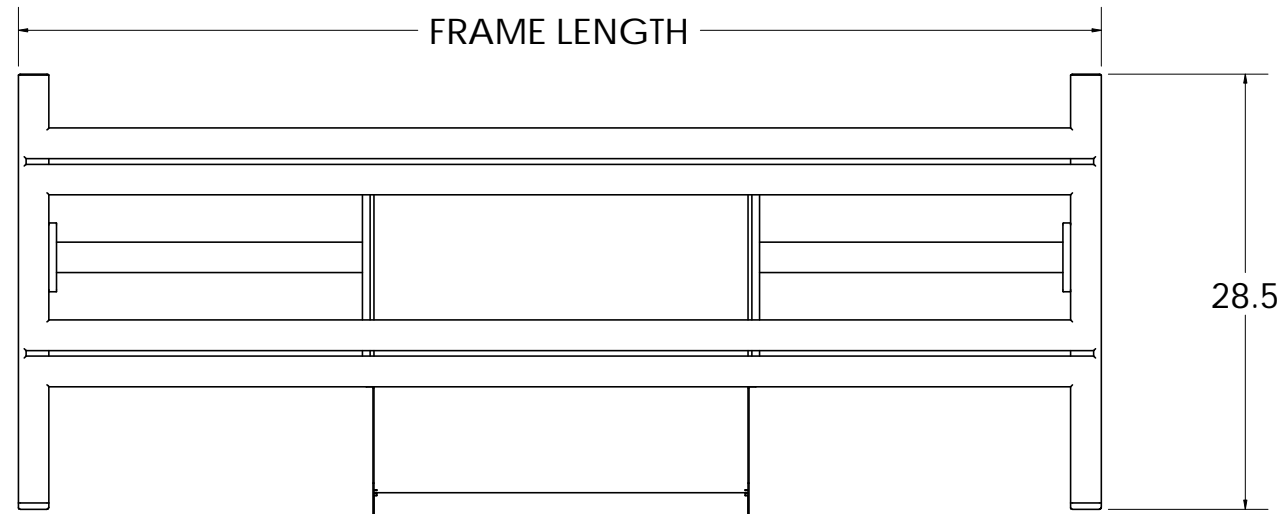


- NOTES, UNLESS OTHERWISE SPECIFIED:
1. FRAME MATERIAL: STEEL.
 2. KEYBOARD TRAY MATERIAL: ALUMINUM.
 3. FINISH: EPOXY POWDER COAT, BLACK.
 4. OPEN TUBE ENDS CAPPED WITH PLASTIC PLUGS
 5. DRAWER SLIDE PART NUMBER: MCMASTER-CARR #13875A52
 6. LEVELING FEET PART NUMBER: TBD.
 7. SHIPPED TO EUPHONIX UN-ASSEMBLED IN A FOAM-LINED, SKID-MOUNTED CRATE.

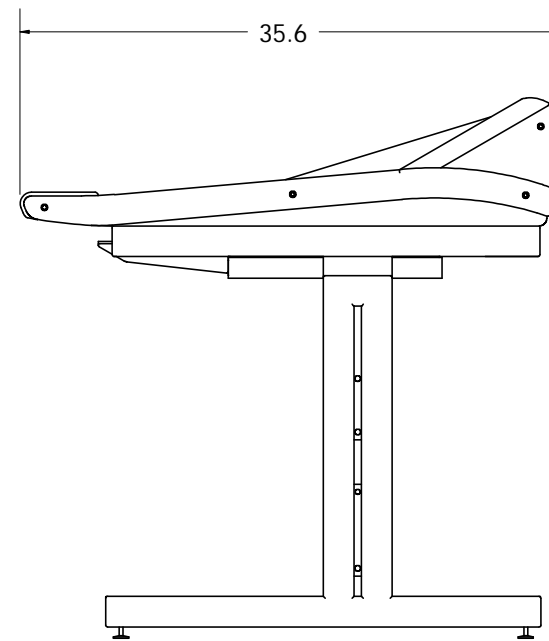
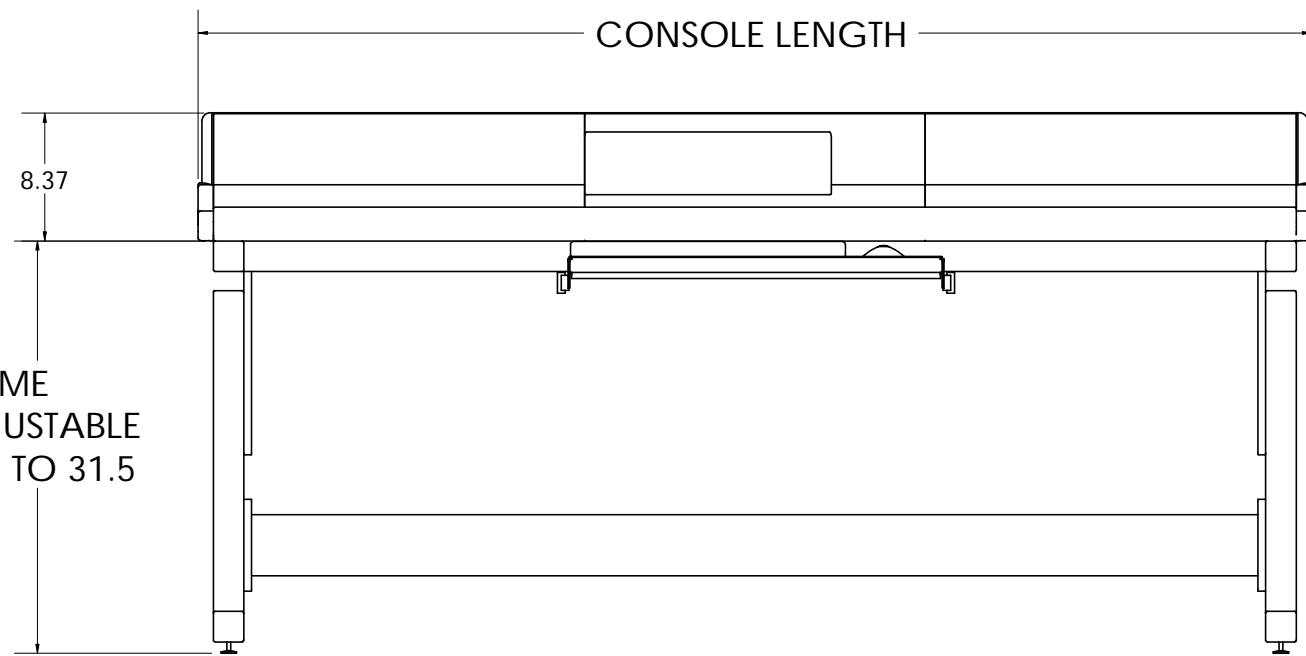
ITEM NO.	PART OR IDENTIFYING NO.	NOMENCLATURE OR DESCRIPTION	MATERIAL SPECIFICATION	QTY REQD
PARTS LIST				
UNLESS OTHERWISE SPECIFIED DIMENSIONS ARE IN INCHES TOLERANCES ARE:		CAD GENERATED DRAWING, DO NOT MANUALLY UPDATE		
FRACTIONS	DECIMALS	ANGLES	APPROVALS	DATE
N/A	.XX ±.01	±.5°	DRAWN JMG	2/20/03
MATERIAL		CHECKED		
FINISH		RESP ENG JMG 2/20/03		
NEXT ASSY		MFG ENG		
USED ON		QUAL ENG		
APPLICATION		DO NOT SCALE DRAWING		
EUPHONIX 220 PORTAGE AVE PALO ALTO, CA 94306			FRAME - MAX 32 FADER	
SIZE DWG. NO. 726-08777			REV. A	
CAD FILE: 726-08777-01-A(FRAME-MAX-32 FADER)				
SCALE: 1:12			SHEET 1 OF 9	

THE INFORMATION CONTAINED IN THIS DRAWING IS THE SOLE PROPERTY OF EUPHONIX INC. ANY REPRODUCTION IN PART OR WHOLE WITHOUT THE WRITTEN PERMISSION OF EUPHONIX IS PROHIBITED.

REVISIONS			
REV.	DESCRIPTION	DATE	APPROVED
A	SEE SHEET 1		



CONSOLE SIZE	FRAME LENGTH	CONSOLE LENGTH
16 FADERS	46.6"	48.6"
32 FADERS	70.9"	72.9"
48 FADERS	95.2"	97.2"



ITEM NO.	PART OR IDENTIFYING NO.	NOMENCLATURE OR DESCRIPTION	MATERIAL SPECIFICATION	QTY REQD
PARTS LIST				
UNLESS OTHERWISE SPECIFIED DIMENSIONS ARE IN INCHES TOLERANCES ARE:		CAD GENERATED DRAWING, DO NOT MANUALLY UPDATE		
FRACTIONS	DECIMALS	ANGLES	APPROVALS	DATE
N/A	.XX ±.01	±.5°	DRAWN	JMG 2/20/03
	.XXX ±.005		CHECKED	
MATERIAL		RESP ENG	JMG	2/20/03
FINISH		MFG ENG		
APPLICATION		QUAL ENG		
NEXT ASSY		USED ON		
		DO NOT SCALE DRAWING		

EUPHONIX
220 PORTAGE AVE PALO ALTO, CA 94306

FRAME- MAX AIR

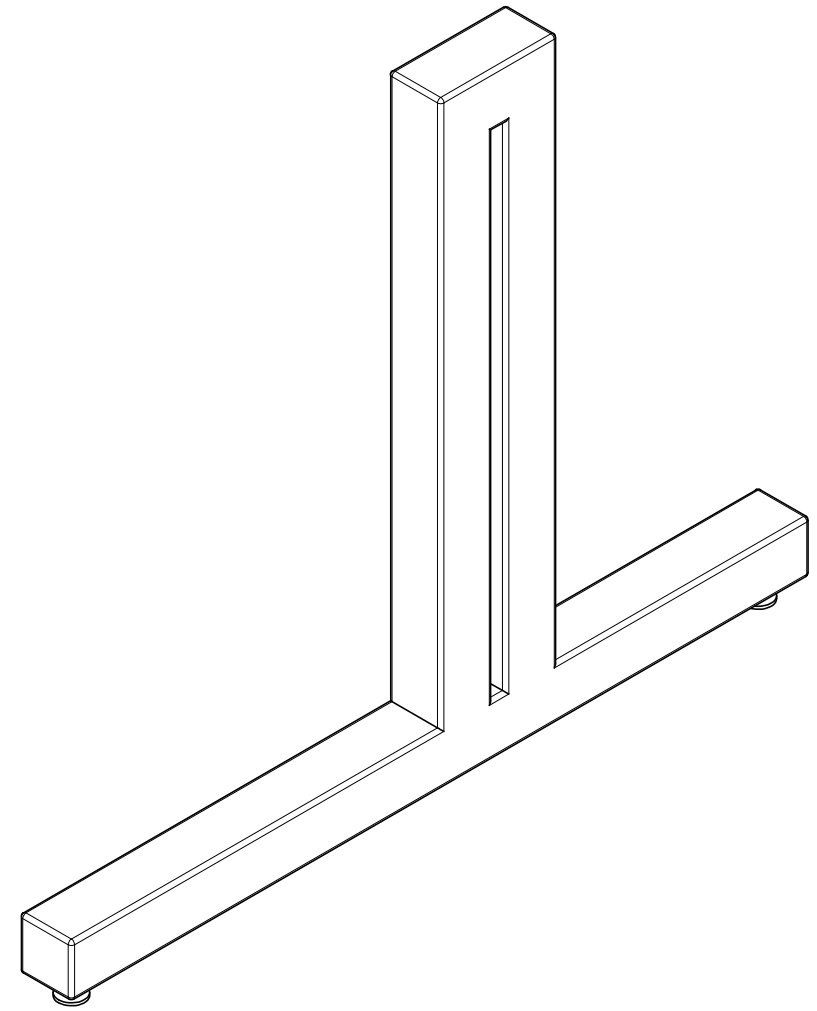
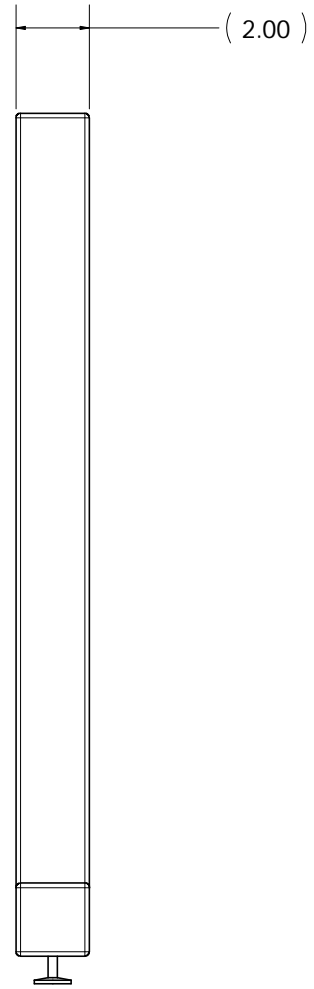
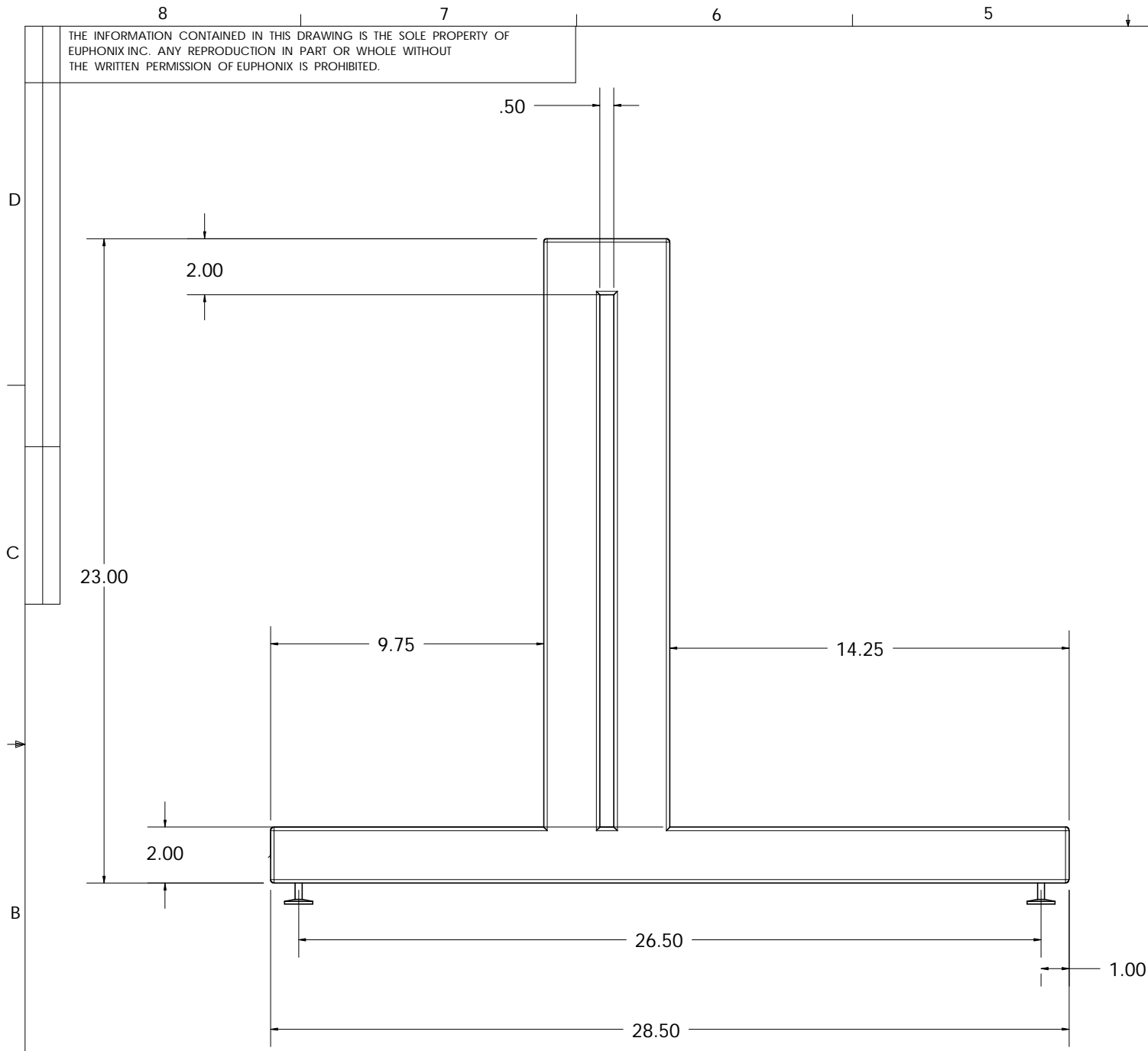
SIZE DWG. NO. 726-08777 REV. A

CAD FILE: 726-08777-01-A(FRAME-MAX-32 FADER)

SCALE: 1:12 SHEET 2 OF 9

THE INFORMATION CONTAINED IN THIS DRAWING IS THE SOLE PROPERTY OF EUPHONIX INC. ANY REPRODUCTION IN PART OR WHOLE WITHOUT THE WRITTEN PERMISSION OF EUPHONIX IS PROHIBITED.

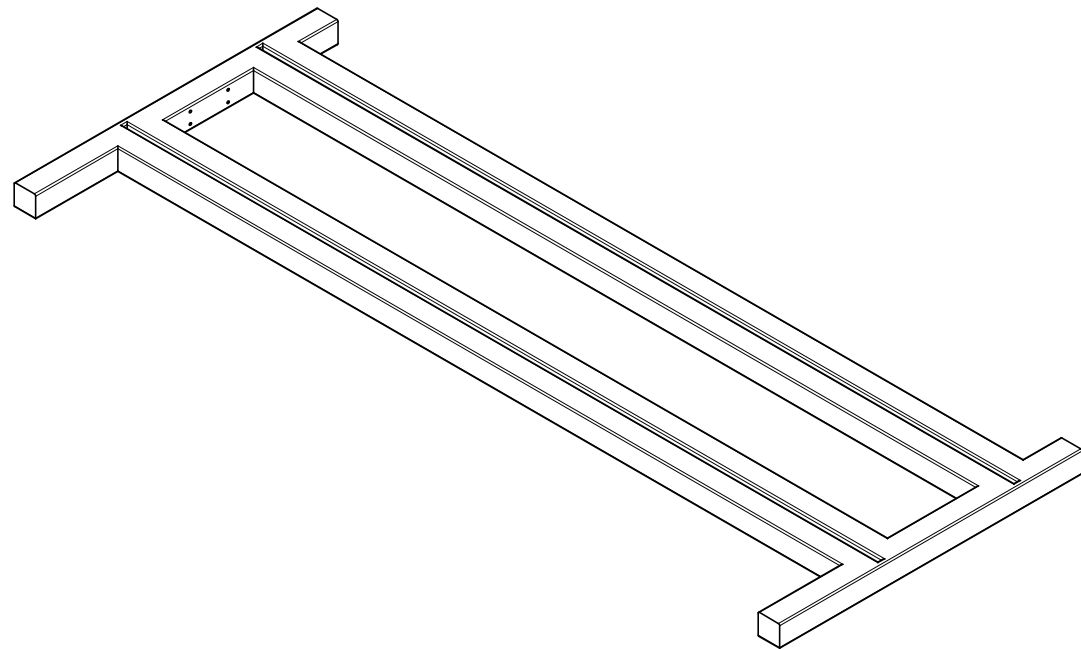
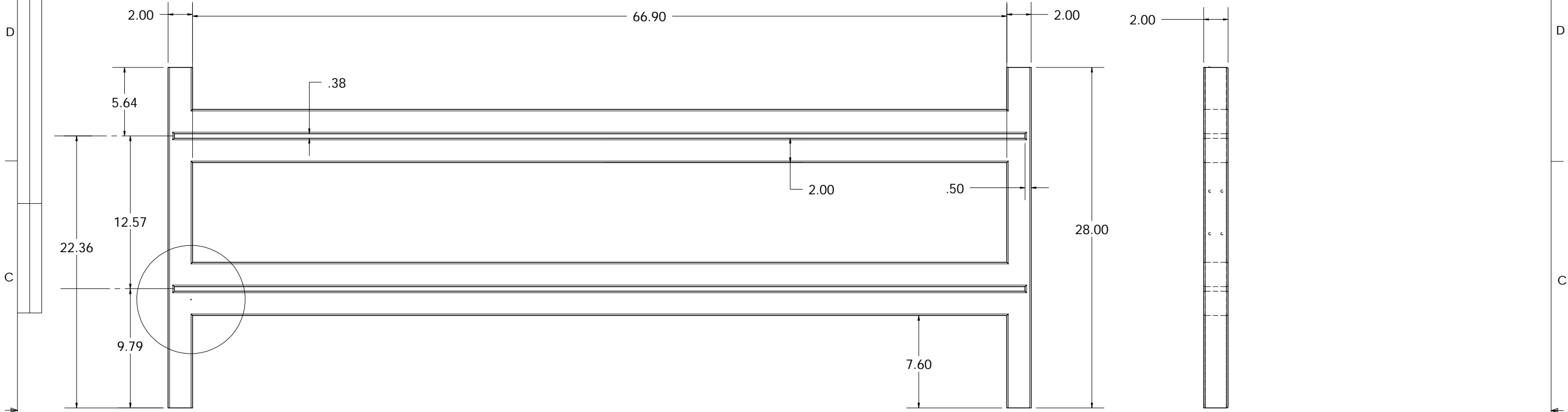
REVISIONS			
REV.	DESCRIPTION	DATE	APPROVED
A-	SEE SHEET 1		



ITEM NO.	PART OR IDENTIFYING NO.	NOMENCLATURE OR DESCRIPTION	MATERIAL SPECIFICATION	QTY REQD
PARTS LIST				
UNLESS OTHERWISE SPECIFIED DIMENSIONS ARE IN INCHES TOLERANCES ARE:		CAD GENERATED DRAWING, DO NOT MANUALLY UPDATE		
FRACTIONS	DECIMALS	ANGLES	APPROVALS	DATE
N/A	.XX ± .01	± .5°	DRAWN	JMG 2/20/03
	.XXX ± .005		CHECKED	
MATERIAL		RESP ENG	JMG	2/20/03
FINISH		MFG ENG		
QUAL ENG				
NEXT ASSY	USED ON	EUPHONIX 220 PORTAGE AVE PALO ALTO, CA 94306		REV. A
APPLICATION		FRAME - MAX 32 FADER		
DO NOT SCALE DRAWING		SIZE DWG. NO. 726-08777		
		CAD FILE: 726-08777-01-A(FRAME-MAX-32 FADER)		
		SCALE: 1:5		SHEET 3 OF 9

THE INFORMATION CONTAINED IN THIS DRAWING IS THE SOLE PROPERTY OF EUPHONIX INC. ANY REPRODUCTION IN PART OR WHOLE WITHOUT THE WRITTEN PERMISSION OF EUPHONIX IS PROHIBITED.

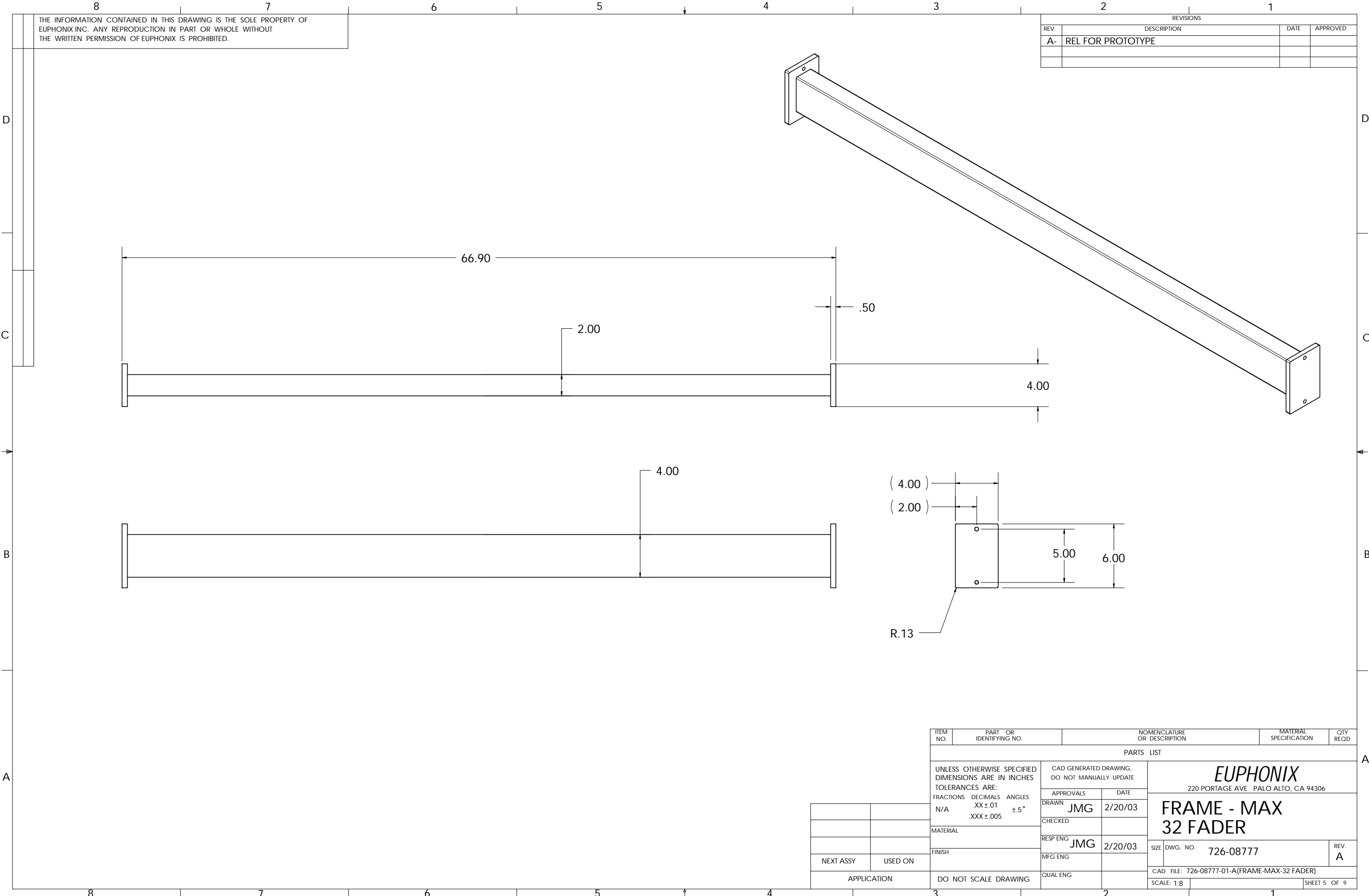
REVISIONS			
REV.	DESCRIPTION	DATE	APPROVED
A-	SEE SHEET 1		



ITEM NO.	PART OR IDENTIFYING NO.	NOMENCLATURE OR DESCRIPTION	MATERIAL SPECIFICATION	QTY REQD
PARTS LIST				
UNLESS OTHERWISE SPECIFIED DIMENSIONS ARE IN INCHES TOLERANCES ARE:		CAD GENERATED DRAWING, DO NOT MANUALLY UPDATE		
FRACTIONS	DECIMALS	ANGLES	APPROVALS	DATE
N/A	.XX ± .01	± .5°	DRAWN JMG	2/20/03
	.XXX ± .005		CHECKED	
MATERIAL		RESP ENG JMG 2/20/03		
FINISH		MFG ENG		
APPLICATION		QUAL ENG		
NEXT ASSY		USED ON		
APPLICATION		DO NOT SCALE DRAWING		
EUPHONIX				
220 PORTAGE AVE PALO ALTO, CA 94306				
FRAME - MAX 32 FADER				
SIZE DWG. NO. 726-08777			REV. A	
CAD FILE: 726-08777-01-A(FRAME-MAX-32 FADER)				
SCALE: 1:8			SHEET 4 OF 9	

THE INFORMATION CONTAINED IN THIS DRAWING IS THE SOLE PROPERTY OF EUPHONIX INC. ANY REPRODUCTION IN PART OR WHOLE WITHOUT THE WRITTEN PERMISSION OF EUPHONIX IS PROHIBITED.

REVISIONS			
REV.	DESCRIPTION	DATE	APPROVED
A-	REL FOR PROTOTYPE		



ITEM NO.	PART OR IDENTIFYING NO.	NOMENCLATURE OR DESCRIPTION	MATERIAL SPECIFICATION	QTY REQD
PARTS LIST				
UNLESS OTHERWISE SPECIFIED DIMENSIONS ARE IN INCHES TOLERANCES ARE:		CAD GENERATED DRAWING, DO NOT MANUALLY UPDATE		
FRACTIONS	DECIMALS	ANGLES	APPROVALS	DATE
N/A	.XX ± .01	± .5°	DRAWN	JMG 2/20/03
	.XXX ± .005		CHECKED	
MATERIAL			RESP ENG	JMG 2/20/03
FINISH			MFG ENG	
NEXT ASSY	USED ON		QUAL ENG	
APPLICATION	DO NOT SCALE DRAWING			

EUPHONIX
220 PORTAGE AVE PALO ALTO, CA 94306

**FRAME - MAX
32 FADER**

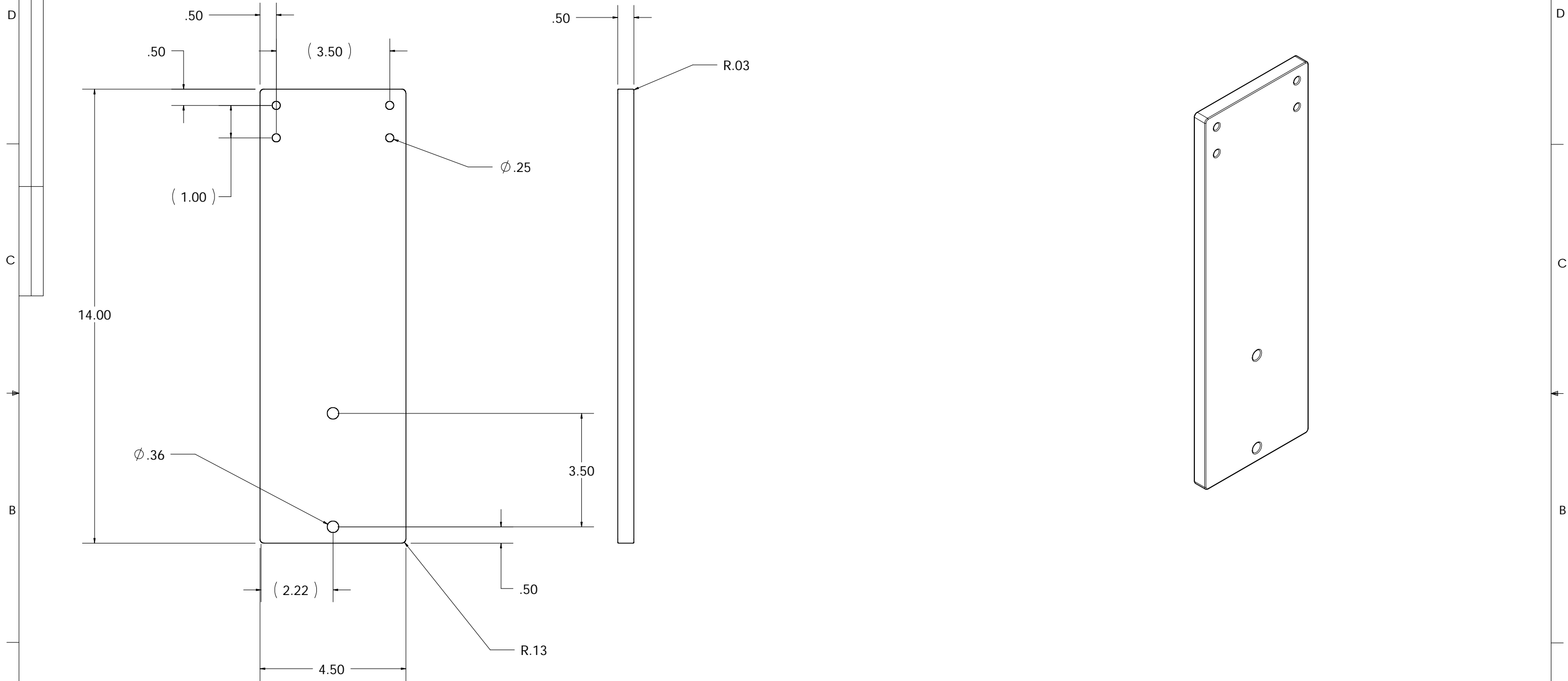
SIZE DWG. NO. 726-08777 REV. A

CAD FILE: 726-08777-01-A(FRAME-MAX-32 FADER)

SCALE: 1:8 SHEET 5 OF 9

THE INFORMATION CONTAINED IN THIS DRAWING IS THE SOLE PROPERTY OF EUPHONIX INC. ANY REPRODUCTION IN PART OR WHOLE WITHOUT THE WRITTEN PERMISSION OF EUPHONIX IS PROHIBITED.

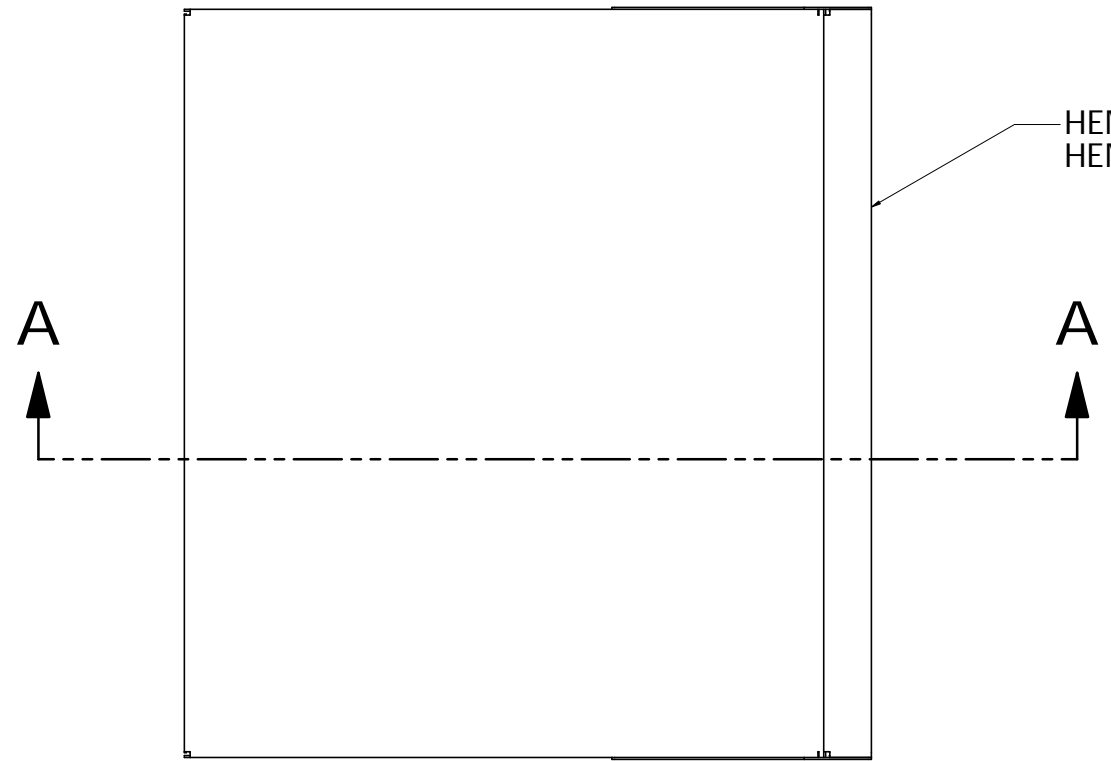
REVISIONS			
REV.	DESCRIPTION	DATE	APPROVED
A	REL FOR PROTOTYPE		



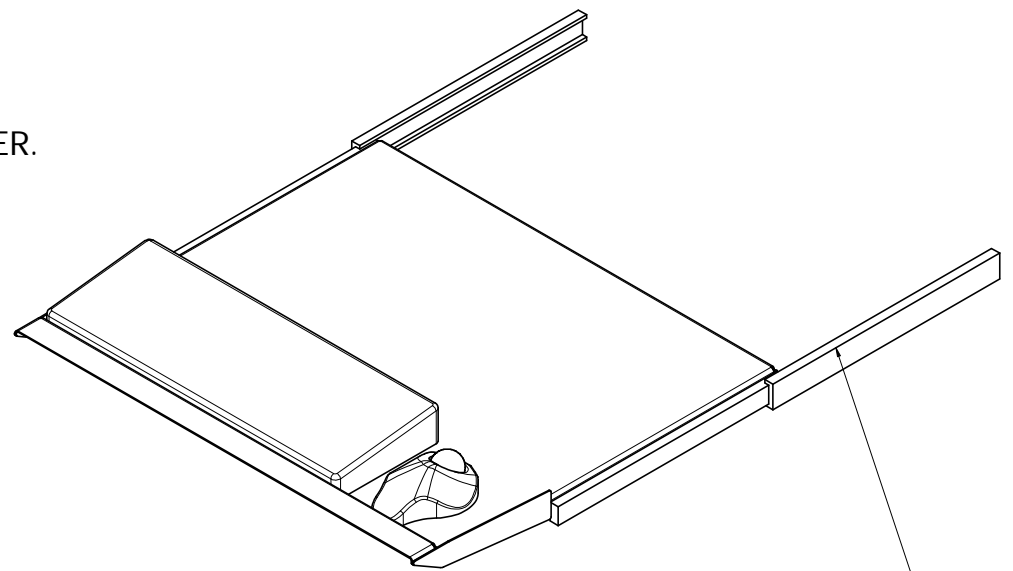
ITEM NO.	PART OR IDENTIFYING NO.	NOMENCLATURE OR DESCRIPTION	MATERIAL SPECIFICATION	QTY REQD
PARTS LIST				
UNLESS OTHERWISE SPECIFIED DIMENSIONS ARE IN INCHES TOLERANCES ARE:		CAD GENERATED DRAWING, DO NOT MANUALLY UPDATE		
FRACTIONS	DECIMALS	ANGLES	APPROVALS	DATE
N/A	.XX ± .01	± .5°	DRAWN JMG	2/20/03
	.XXX ± .005		CHECKED	
MATERIAL		RESP ENG JMG 2/20/03		
FINISH		MFG ENG		
APPLICATION		QUAL ENG		
NEXT ASSY		USED ON		
APPLICATION		DO NOT SCALE DRAWING		
		EUPHONIX		
		220 PORTAGE AVE PALO ALTO, CA 94306		
		FRAME - MAX		
		32 FADER		
SIZE		DWG. NO. 726-08777		REV. A
CAD FILE: 726-08777-01-A(FRAME-MAX-32 FADER)				
SCALE: 1:3		SHEET 6 OF 9		

THE INFORMATION CONTAINED IN THIS DRAWING IS THE SOLE PROPERTY OF EUPHONIX INC. ANY REPRODUCTION IN PART OR WHOLE WITHOUT THE WRITTEN PERMISSION OF EUPHONIX IS PROHIBITED.

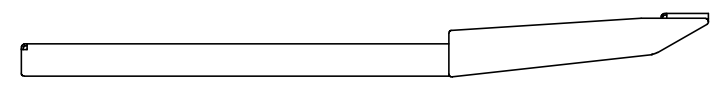
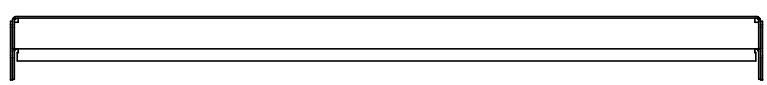
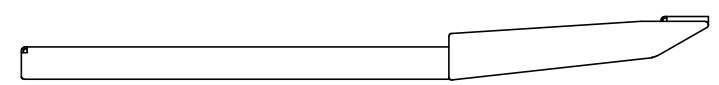
REVISIONS			
REV.	DESCRIPTION	DATE	APPROVED
A-	REL FOR PROTOTYPE		



HEM ON FRONT EDGE BENT UNDER.
HEM NOT MODELED



DRAWER SLIDE
MCMASTER-CARR
13875A52

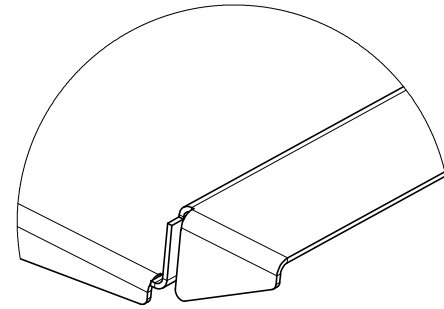
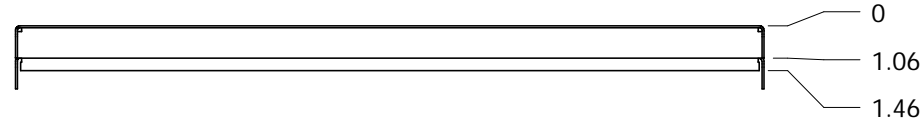
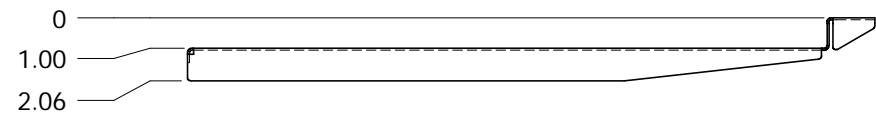
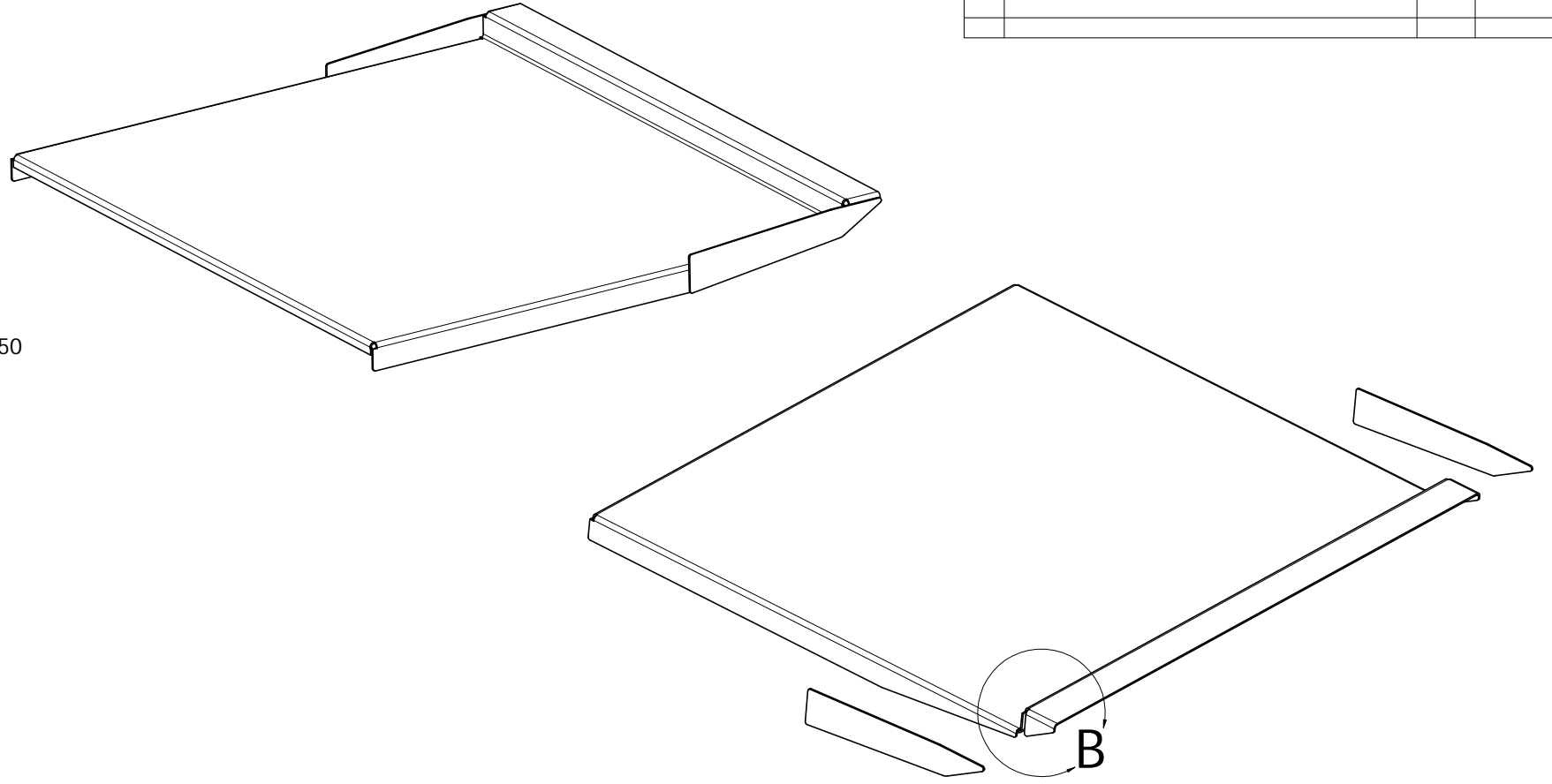
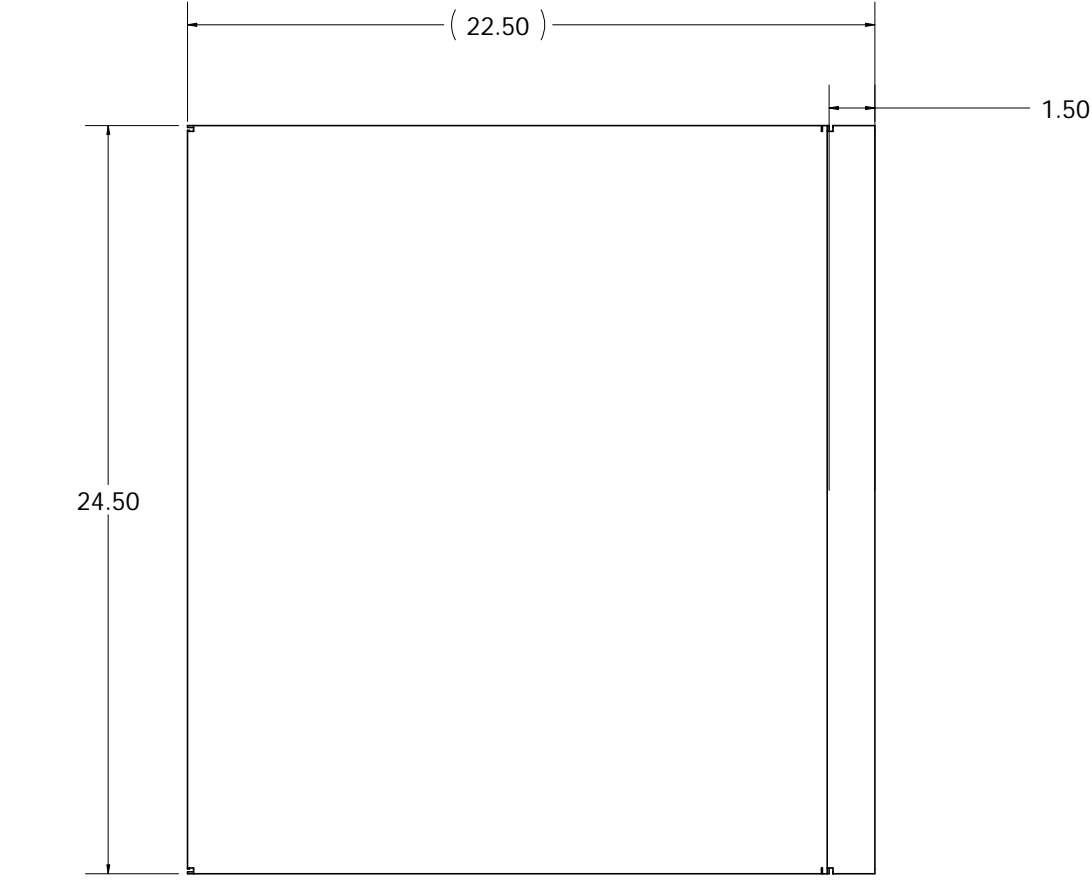
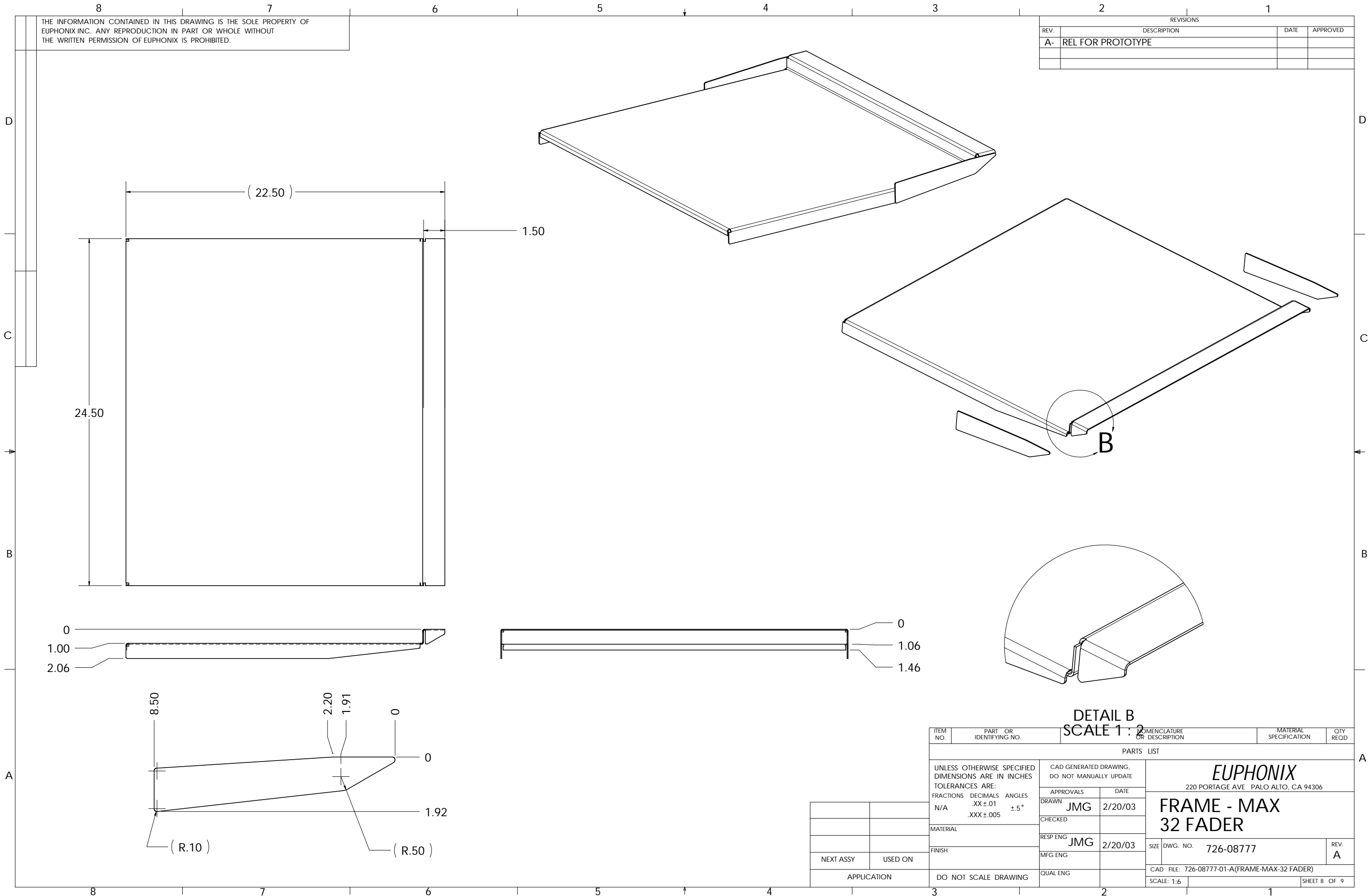


SECTION A-A

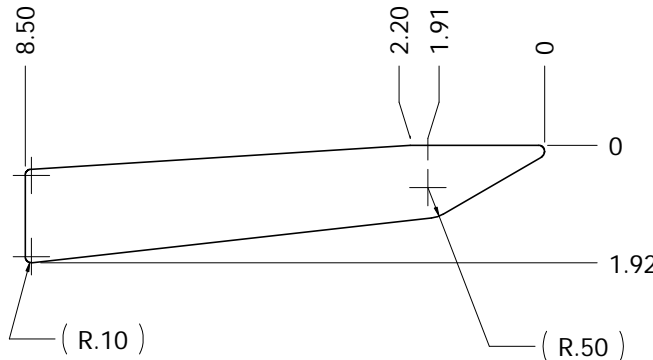
ITEM NO.	PART OR IDENTIFYING NO.	NOMENCLATURE OR DESCRIPTION	MATERIAL SPECIFICATION	QTY REQD
PARTS LIST				
UNLESS OTHERWISE SPECIFIED DIMENSIONS ARE IN INCHES TOLERANCES ARE:		CAD GENERATED DRAWING, DO NOT MANUALLY UPDATE		
FRACTIONS	DECIMALS	ANGLES	APPROVALS	DATE
N/A	.XX ±.01	±.5°	DRAWN	JMG 2/20/03
	.XXX ±.005		CHECKED	
MATERIAL		RESP ENG JMG 2/20/03		
FINISH		MFG ENG		
APPLICATION		QUAL ENG		
NEXT ASSY		USED ON		
APPLICATION		DO NOT SCALE DRAWING		
EUPHONIX			220 PORTAGE AVE PALO ALTO, CA 94306	
FRAME - MAX 32 FADER			SIZE	DWG. NO. 726-08777
			REV.	A
CAD FILE: 726-08777-01-A(FRAME-MAX-32 FADER)				
SCALE: 1:6			SHEET 7 OF 9	

THE INFORMATION CONTAINED IN THIS DRAWING IS THE SOLE PROPERTY OF EUPHONIX INC. ANY REPRODUCTION IN PART OR WHOLE WITHOUT THE WRITTEN PERMISSION OF EUPHONIX IS PROHIBITED.

REVISIONS			
REV.	DESCRIPTION	DATE	APPROVED
A-	REL FOR PROTOTYPE		



DETAIL B
SCALE 1 : 2

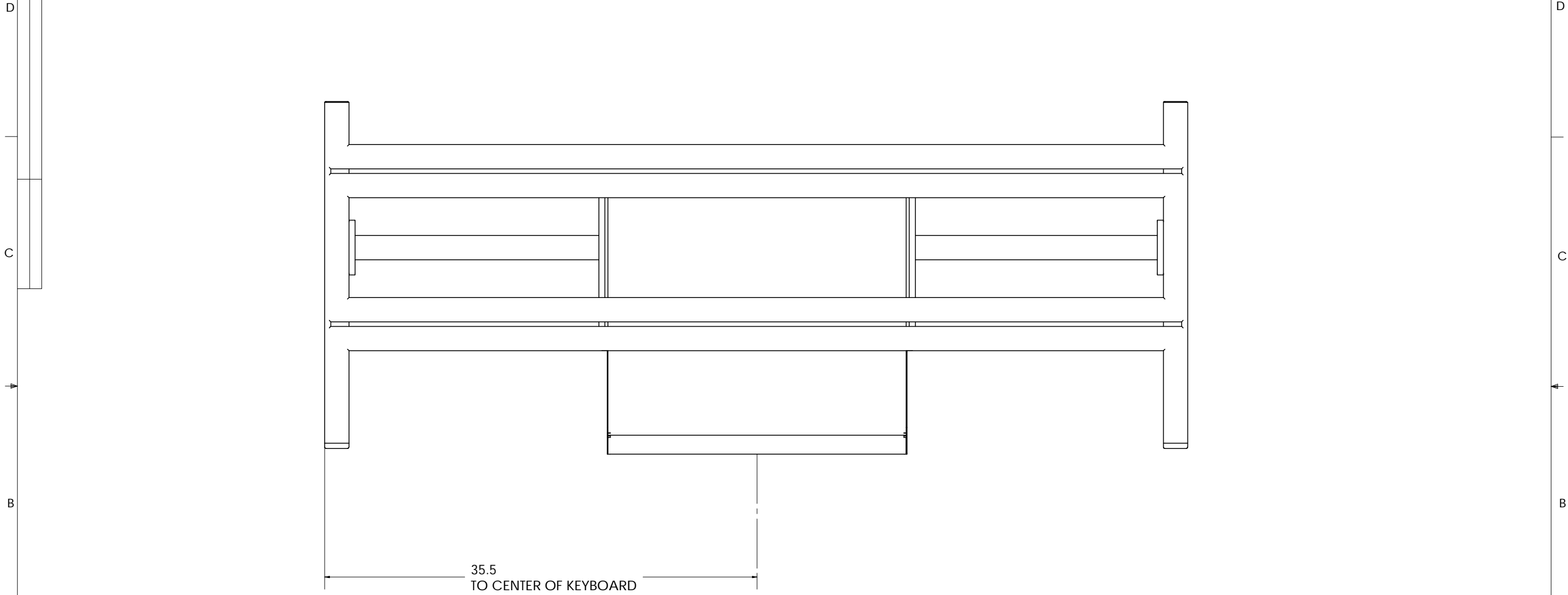


ITEM NO.	PART OR IDENTIFYING NO.	QUANTITY	DESCRIPTION	MATERIAL SPECIFICATION	QTY REQD
PARTS LIST					
UNLESS OTHERWISE SPECIFIED DIMENSIONS ARE IN INCHES TOLERANCES ARE:		CAD GENERATED DRAWING, DO NOT MANUALLY UPDATE		EUPHONIX 220 PORTAGE AVE PALO ALTO, CA 94306	
FRACTIONS	DECIMALS	ANGLES	APPROVALS	DATE	FRAME - MAX 32 FADER
N/A	.XX ±.01	±.5°	DRAWN	JMG 2/20/03	
MATERIAL			CHECKED		SIZE DWG. NO. 726-08777 REV. A
FINISH			RESP ENG	JMG 2/20/03	
NEXT ASSY	USED ON	APPLICATION	MFG ENG		CAD FILE: 726-08777-01-A(FRAME-MAX-32 FADER) SCALE: 1:6 SHEET 8 OF 9
		DO NOT SCALE DRAWING	QUAL ENG		

8 7 6 5 4 3 2 1

THE INFORMATION CONTAINED IN THIS DRAWING IS THE SOLE PROPERTY OF EUPHONIX INC. ANY REPRODUCTION IN PART OR WHOLE WITHOUT THE WRITTEN PERMISSION OF EUPHONIX IS PROHIBITED.

REVISIONS			
REV.	DESCRIPTION	DATE	APPROVED
A	SEE SHEET 1		



ITEM NO.	PART OR IDENTIFYING NO.	NOMENCLATURE OR DESCRIPTION	MATERIAL SPECIFICATION	QTY REQD
PARTS LIST				
UNLESS OTHERWISE SPECIFIED DIMENSIONS ARE IN INCHES TOLERANCES ARE:		CAD GENERATED DRAWING, DO NOT MANUALLY UPDATE		
FRACTIONS	DECIMALS	ANGLES	APPROVALS	DATE
N/A	.XX ±.01	±.5°	DRAWN JMG	2/20/03
	.XXX ±.005		CHECKED	
MATERIAL		RESP ENG JMG 2/20/03		
FINISH		MFG ENG		
APPLICATION		QUAL ENG		
NEXT ASSY		USED ON		
APPLICATION		DO NOT SCALE DRAWING		
		EUPHONIX		
		220 PORTAGE AVE PALO ALTO, CA 94306		
		FRAME - MAX		
		32 FADER		
		SIZE DWG. NO. 726-08777		REV. A
		CAD FILE: 726-08777-01-A(FRAME-MAX-32 FADER)		
		SCALE: 1:8		SHEET 9 OF 9