



EuControl Soft Key Editor for Pro Tools | S3

Requires EuControl 3.2.2 or Higher

When using Pro Tools® | S3 with Pro Tools and other selected DAWs, an Appset is installed providing default functionality for S3 surface controls. You can customize certain controls on S3 using the Soft Key Editor provided in EuControl software 3.2.2 and higher.

Overview

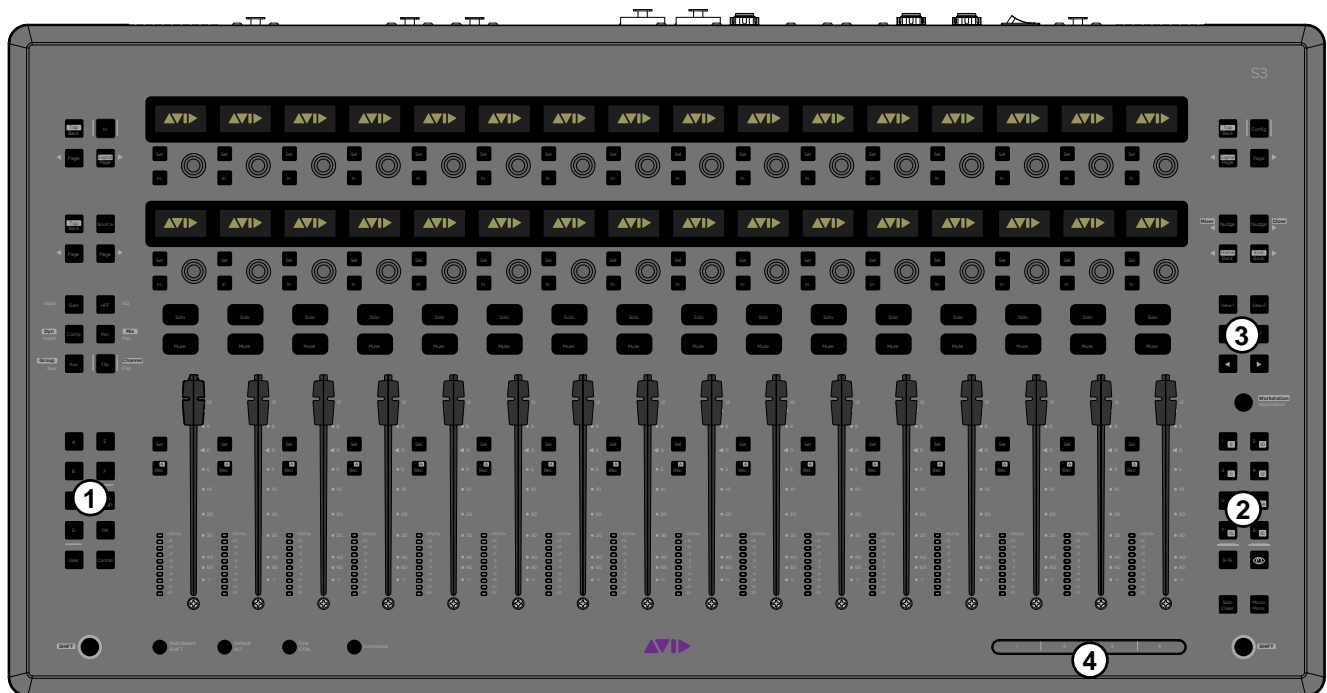
You can customize the functions of the switches in the following sections on the S3:

1 – Left Control

3 – Views/Arrows

2 – Right Control

4 – Touchstrip

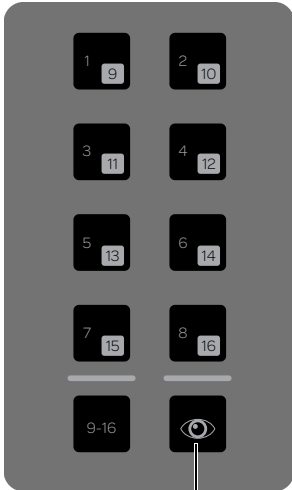


S3 top panel

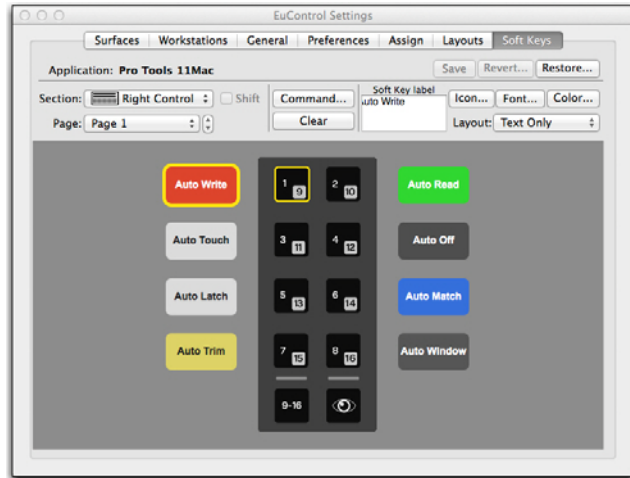
Viewing Soft Key Assignments in the Soft Key Editor

To view assignments in the Soft Key Editor:

- 1 Launch Pro Tools and confirm that EuControl is connected to the S3, indicated by a lit EuControl icon in the Menu Bar (Mac) or the System Tray (Windows).
- 2 On S3, press the **Show Me** switch. The Soft Keys currently assigned to the Right Control switches are shown on-screen.




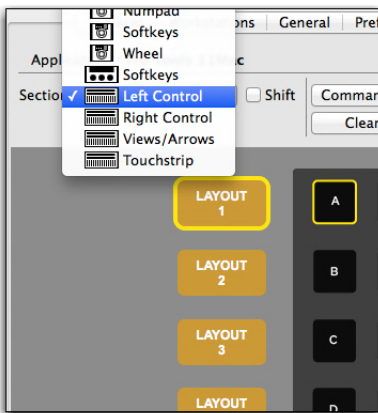
Show Me switch



Right Control Soft Key assignments

- 3 To view the second page of switches for the Right Control section, click the Page selector and choose Page 2 from the pop-up menu.
- 4 To view assignments for the other sections of switches, click the Section selector and choose one of the following:
 - Left Control
 - Views/Arrows
 - Touchstrip

 Other options such as Surface and Touchscreen are not applicable to S3.



Section selector pop-up menu

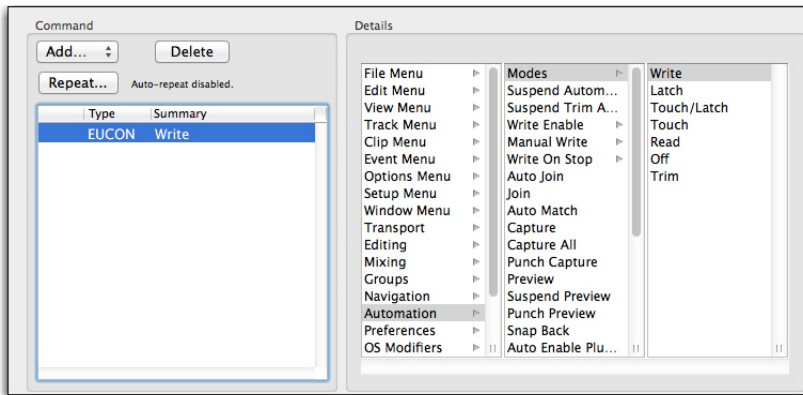
- 5 To view switches assigned to the Shift layer (functions accessed by pressing the **Surface SHIFT** switch plus the relevant switch) of the Left Control, Views/Arrow, or Touchstrip sections, click to enable the Shift checkbox.

Using the Soft Key Editor

The Soft Key Editor lets you reassign a switch from its default Soft Key assignment (if applicable), add a new command to an unassigned switch, revert (undo) all recent assignment, and restore to factory default assignments. You can also add a key command to a switch to invoke a keyboard shortcut.

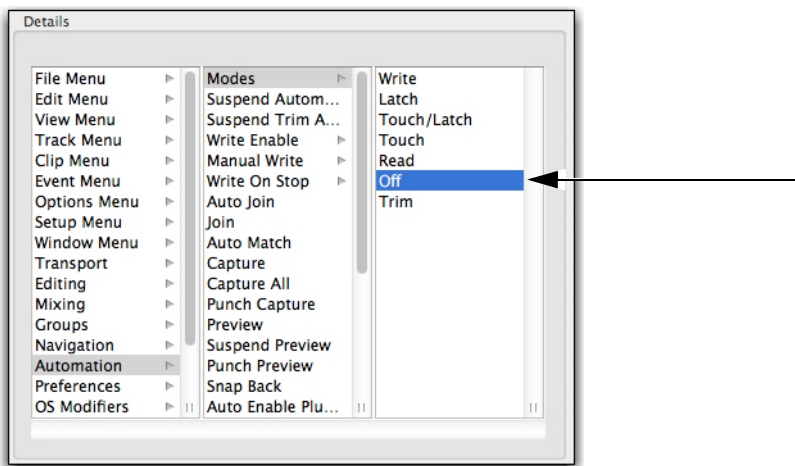
To reassign a Soft Key for Pro Tools:

- 1 Launch Pro Tools and confirm that EuControl is connected to the S3, indicated by a lit EuControl icon in the Menu Bar (Mac) or the System Tray (Windows).
- 2 Press the **Show Me** switch.
- 3 Click the Section selector and choose the section of switches containing the switch you want to reassign.
- 4 On-screen double-click the switch you want to reassign. The Soft Key Command Editor window opens, showing the switch's current assignment.




Soft Key Command Editor

- 5 To reassign the currently selected switch, click a different command. For example, click Off in the third (right-most) list in the Details area. You can also click to make a new selection in the first (left-most) or middle Details list (such as File Menu, Edit Menu, and so on) to access other choices, as available.



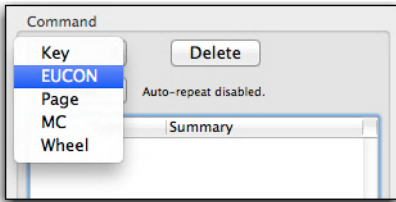
A new assignment shown in the Command Editor

- 6 Close the Soft Key Command Editor and return to the EuControl Settings window.
- 7 If desired, click the Save button in the Soft Keys tab to save the assignments. The next time you launch EuControl, your custom assignments are recalled.

 *If you do not save assignments, EuControl software retains your assignments until you Quit (Mac) or Exit (Windows) the EuControl application. EuControl then recalls the default Appset the next time you launch EuControl.*

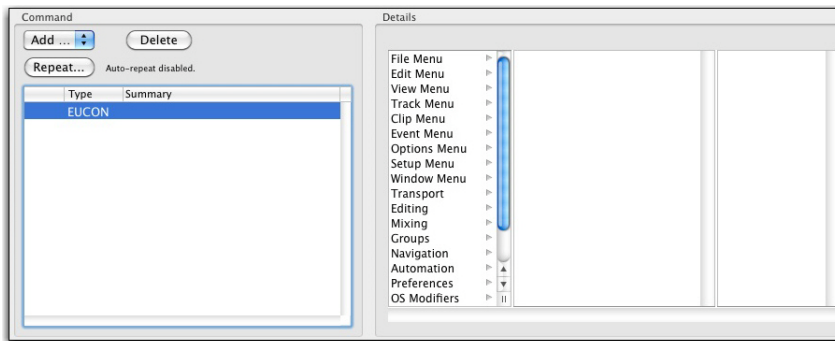
To add a new assignment:

- 1 Launch Pro Tools and confirm the EuControl is connected to the S3, indicated by a lit EuControl icon in the Menu Bar (Mac) or the System Tray (Windows).
- 2 Press the **Show Me** switch.
- 3 Click the Section selector and choose the section of switches containing the switch you want to assign.
- 4 On-screen, double-click the switch you want to assign. The Soft Key Command Editor window opens.
- 5 In the Command area, click Add and choose EUCON.



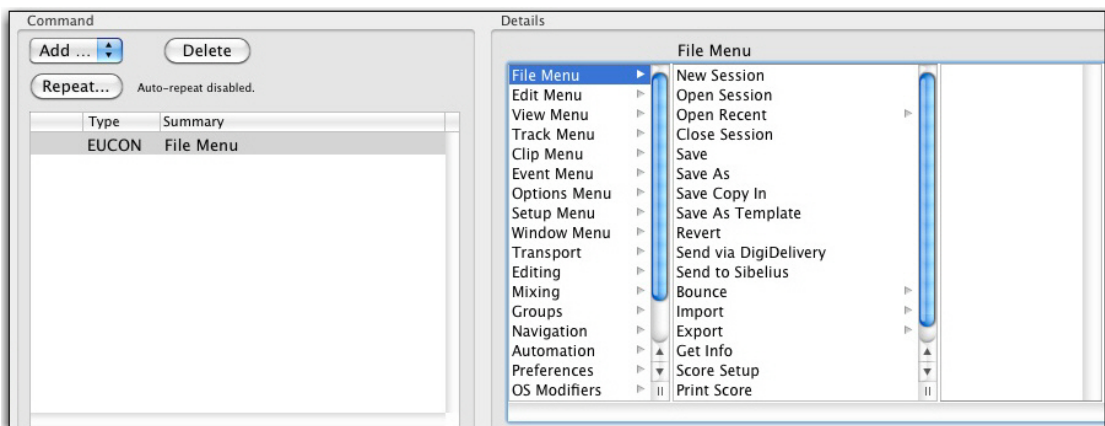
Adding a new EUCON command

After you add a EUCON command, choices appear in the Details area.



The Details area showing commands

- 6 Click an item in the left-most list (level 1) within the Details area to reveal associated commands in the middle column.



An item selected in Level 1 (the first column) of the Details area

- 7 Click a command to assign a command, or click an item with an arrow to reveal more commands in the third column and assign as necessary.
- 8 Close the Soft Key Command Editor and return to the EuControl Settings window.
- 9 If desired, click the Save button in the Soft Keys tab to save the assignments.

To revert (undo) all assignments since the last time you saved changes:

- Click the Revert button in the Soft Keys tab.

To restore assignments to their factory defaults:

- Click the Restore button in the Soft Keys tab.

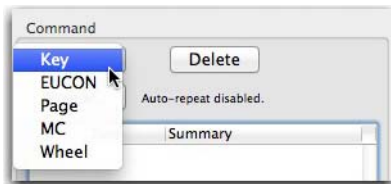
Adding a Custom Key Command

You can invoke a keyboard shortcut that has no pre-defined function in the EuControl using the Soft Key Editor. The following workflow shows how to assign the Pro Tools shortcut for halving the length of an Edit selection (Command + Control + Option + Shift + L on Mac, and Ctrl + Alt + Start + Shift + L on Windows) to a switch on the S3.

 You can use the Pro Tools Shortcut Guide to find the relevant Pro Tools shortcuts for your operating system. You can also create your own shortcuts and assign them to a switch.

To assign a custom key command:

- 1 Launch Pro Tools and confirm EuControl is connected to the S3, indicated by a lit EuControl icon in the Menu Bar (Mac) or the System Tray (Windows).
- 2 Press the **Show Me** switch on S3.
- 3 Click the Section selector and choose the section of switches containing the switch you want to assign.
- 4 On-screen, double-click the switch you want to assign. The Soft Key Command Editor window opens.
- 5 In the Soft Key Editor, do the following:
 - If the switch already has an assignment, select the assignment in the Command list then press Delete.
 - Click Add and choose Key.




Choosing Key from the Add pop-up menu

- 6 In the Details area, select Control, Shift, Alt/Opt, and Win/Cmd, then enter “L” in the field below.



Details area of the Soft Key Command Editor

 To insert special keyboard characters in the field such as a Function key or an arrow key, use the Insert Special menu.

- 7 Close the Soft Key Command Editor and return to the EuControl Settings window. Now, pressing the assigned switch halves the length of the current Edit selection in the Pro Tools Edit window.
- 8 If desired, do any of the following:
 - Click in the Soft Key Label field and enter a name for the Soft Key assignment.
 - Click the Save button in the Soft Keys tab to save the assignment.